

Slums | Year 5 | Autumn 2

Keywords

Slum	An informal, densely populated and usually illegal settlement that is inhabited (lived in) by the urban poor.
Settlement	A place where people establish (set up) a community.
Densely populated	Many people living in an area, crowded.
Inhabitant	A person who lives in an area.
Urbanisation	The process whereby an increasing proportion of people live in towns and cities.
Urban	Towns and cities
Rural	Countryside
Migration	The movement of people (or animals) from one place to another.
Push factors	Negative factors that encourage people to leave a particular place.
Pull factors	Positive factors that attract people to a particular place.
Services	A system provided for people, such as transport, education, internet, electricity.
Inequality	Difference or inconsistency
Quality of life	The level of overall wellbeing of an individual, community or a country. It is made up of many factors, including wealth, health, rights and education.
Standard of living	The level of wealth and material goods that an individual, community or country has access to. This is a numerical value, usually measured in US dollars.
Self-help schemes	Government-funded projects that help slum residents improve their homes.

UN-HABITAT Definition of Slums

A settlement that is lacking in (missing) one of the following: safe housing; sufficient living space; easy and affordable access to safe water; access to sanitation; the legal right to the home.



The World's Five Largest Slums

It is estimated that between 900 million and 1.6 billion people live in slums around the world.

1.	Orangi Town (Karachi, Pakistan)	2.4 million
2.	Neza (Mexico City, Mexico)	1.2 million
3.	Dharavi (Mumbai, India)	1 million
4.	Kibera (Nairobi, Kenya)	700 thousand
5.	Khayelitsha (Cape Town, South Africa)	400 thousand



UPP: Rio de Janeiro's Favelas

The UPP (Pacification Police Units) were introduced in 2008 to reduce crime and violence in the favelas. Initially they were very successful.

Synonyms for Slums:

- Squatter settlement
- Shanty town
- Township (South Africa)
- Favela (Brazil)

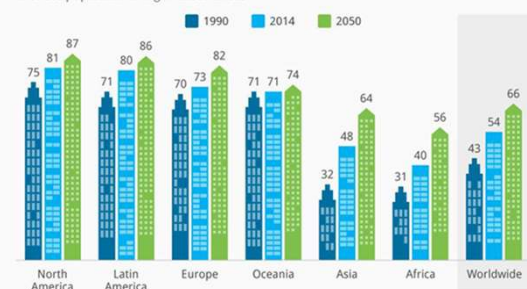


Rocinha Favela (Rio de Janeiro, Brazil)

In Rio de Janeiro, over 20% of people live in favelas.

Population:	Estimated: 150 thousand to 300 thousand people (it is hard to know exactly how many people live in the favela)
Location:	On a steep slope in the southern part of the city.
Area:	Less than 2.5km ² (making the area very densely populated)
Famous for:	Improvements to quality of life of residents, but also crime and drug-related violence

54% of the World's Population Now Lives in Cities
% of the population living in urban areas

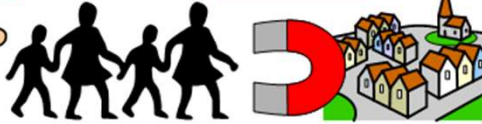


Push Factors



- few services
- lack of job opportunities
- unhappy life
- poor transport links
- natural disasters
- wars
- shortage of food

Pull Factors



- access to services
- better job opportunities
- more entertainment facilities
- better transport links
- improved living conditions
- hope for a better way of life
- family links